

## Supplementary Materials for

### **A urine score for noninvasive accurate diagnosis and prediction of kidney transplant rejection**

Joshua Y. C. Yang, Reuben D. Sarwal, Tara K. Sigdel, Izabella Damm, Ben Rosenbaum, Juliane M. Liberto, Chitranon Chan-On, José M. Arreola-Guerra, Josefina Alberu, Flavio Vincenti, Minnie M. Sarwal\*

\*Corresponding author. Email: [minnie.sarwal@ucsf.edu](mailto:minnie.sarwal@ucsf.edu)

Published 18 March 2020, *Sci. Transl. Med.* **12**, eaba2501 (2020)  
DOI: 10.1126/scitranslmed.aba2501

#### **The PDF file includes:**

Fig. S1. Correlation matrix of biomarkers.

Table S1. Multivariate logistic regression of AR status as assessed by individual biomarkers.

Table S2. Biomarker log-likelihood ratios for the urine score.

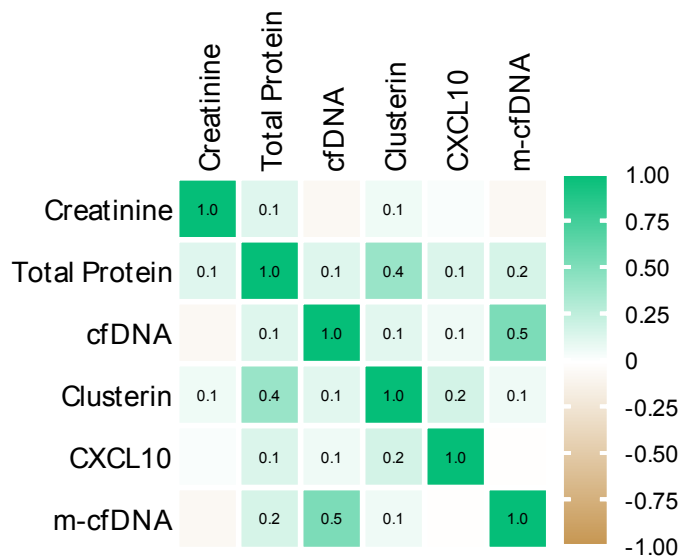
Table S3. Multivariate regression of clinical and demographic variables with the urine score.

#### **Other Supplementary Material for this manuscript includes the following:**

(available at [stm.sciencemag.org/cgi/content/full/12/535/eaba2501/DC1](http://stm.sciencemag.org/cgi/content/full/12/535/eaba2501/DC1))

Data file S1 (Microsoft Excel format). Urine score data.

## Supplementary Figures:



**Fig. S1. Correlation matrix of biomarkers.** In the set of No AR and AR samples, the Pearson correlation coefficients were calculated for each pairwise comparison and displayed as a heatmap, with green indicating a positive correlation and brown indicating a negative correlation. The largest correlations were seen between m-cfDNA and cfDNA ( $r = 0.524$ ) and total protein and clusterin ( $r = 0.405$ ).

**Supplementary Tables:****Table S1. Multivariate logistic regression of AR status as assessed by individual biomarkers.**

<b>Parameter</b>	<b>Estimate</b>	<b>s.e.</b>	<b>X<sup>2</sup></b>	<b>p-value</b>
Intercept	-0.6115	0.5285	1.34	0.2473
Creatinine	-0.0406	0.0103	15.41	<0.0001
Protein	0.0007	0.0013	0.29	0.5899
cfDNA	0.0051	0.0017	8.89	0.0029
Clusterin	3.2712 e-7	1.245 e-6	0.07	0.7927
CXCL10	0.0104	0.0049	4.52	0.0334
m-cfDNA	-0.0011	0.0016	0.46	0.4986

**Table S2. Biomarker log-likelihood ratios for the urine score.**

<b>Parameter</b>	<b>G<sup>2</sup></b>	<b>p-value</b>
cfDNA	17.44	0.0037
m-cfDNA	15.27	0.0093
Creatinine	13.00	0.0234
CXCL10	6.35	0.2736
Clusterin	5.70	0.3365
Protein	4.47	0.4840

**Table S3. Multivariate regression of clinical and demographic variables with the urine score.**

<b>Parameter</b>	<b>X<sup>2</sup></b>	<b>p-value</b>
Recipient Gender	0.5828	0.4452
Donor Gender	1.0643	0.3022
Recipient Age	0.0037	0.9514
Donor Age	0.0186	0.8916
Donor Source	1.9289	0.3812
Sensitization Status	0.472	0.4921
Ethnicity	0	1