

Supplementary Materials for

The FcRn inhibitor rozanolixizumab reduces human serum IgG concentration: A randomized phase 1 study

Peter Kiessling, Rocio Lledo-Garcia,* Shikiko Watanabe, Grant Langdon, Diep Tran, Muhammad Bari, Louis Christodoulou, Emma Jones, Graham Price, Bryan Smith, Frank Brennan, Ian White, Stephen Jolles

*Corresponding author. Email: rocio.lledo-garcia@ucb.com

Published 1 November 2017, *Sci. Transl. Med.* **9**, eaan1208 (2017)
DOI: 10.1126/scitranslmed.aan1208

This PDF file includes:

Fig. S1. The effect of SC or IV dosing of rozanolixizumab (50 and 150 mg/kg every 3 days for 28 days) on mean plasma IgG concentrations in cynomolgus monkeys.

Fig. S2. Changes in selected plasma cytokine concentrations after single-dose rozanolixizumab in healthy subjects.

Fig. S1. The effect of SC or IV dosing of rozanolixizumab (50 and 150 mg/kg every 3 days for 28 days) on mean plasma IgG concentrations in cynomolgus monkeys.

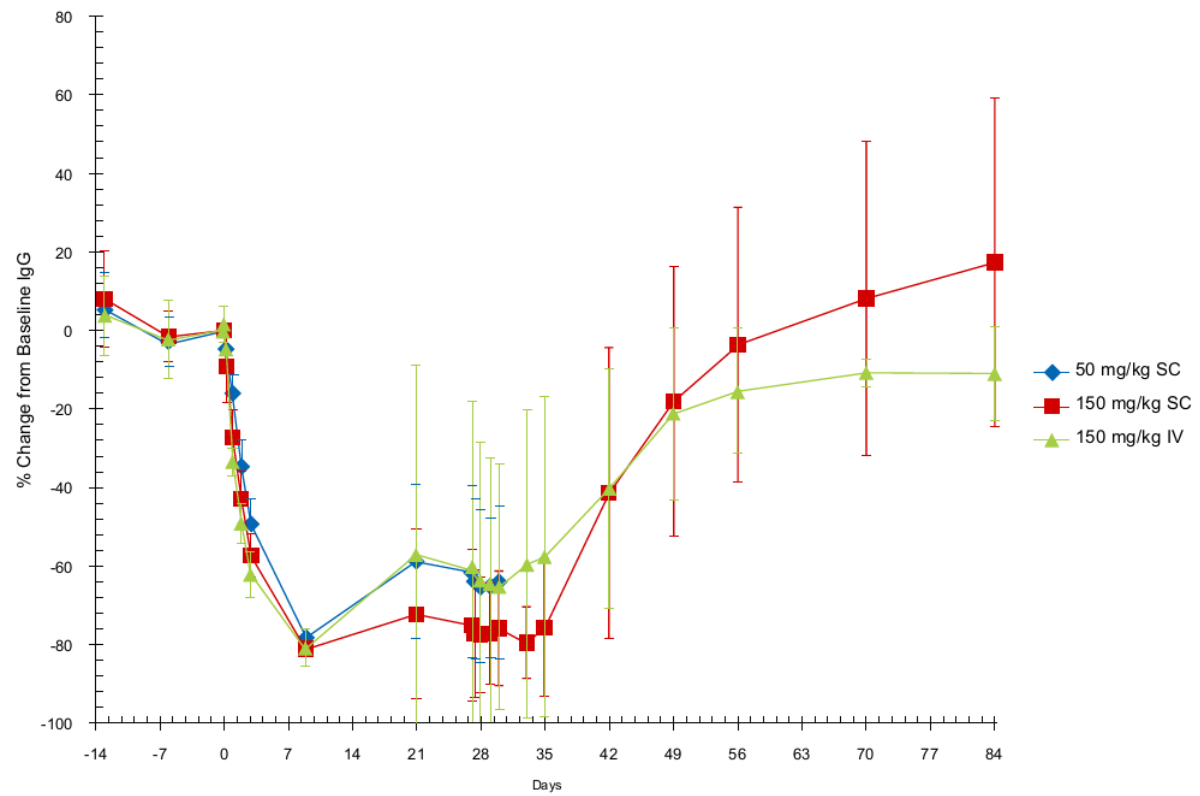
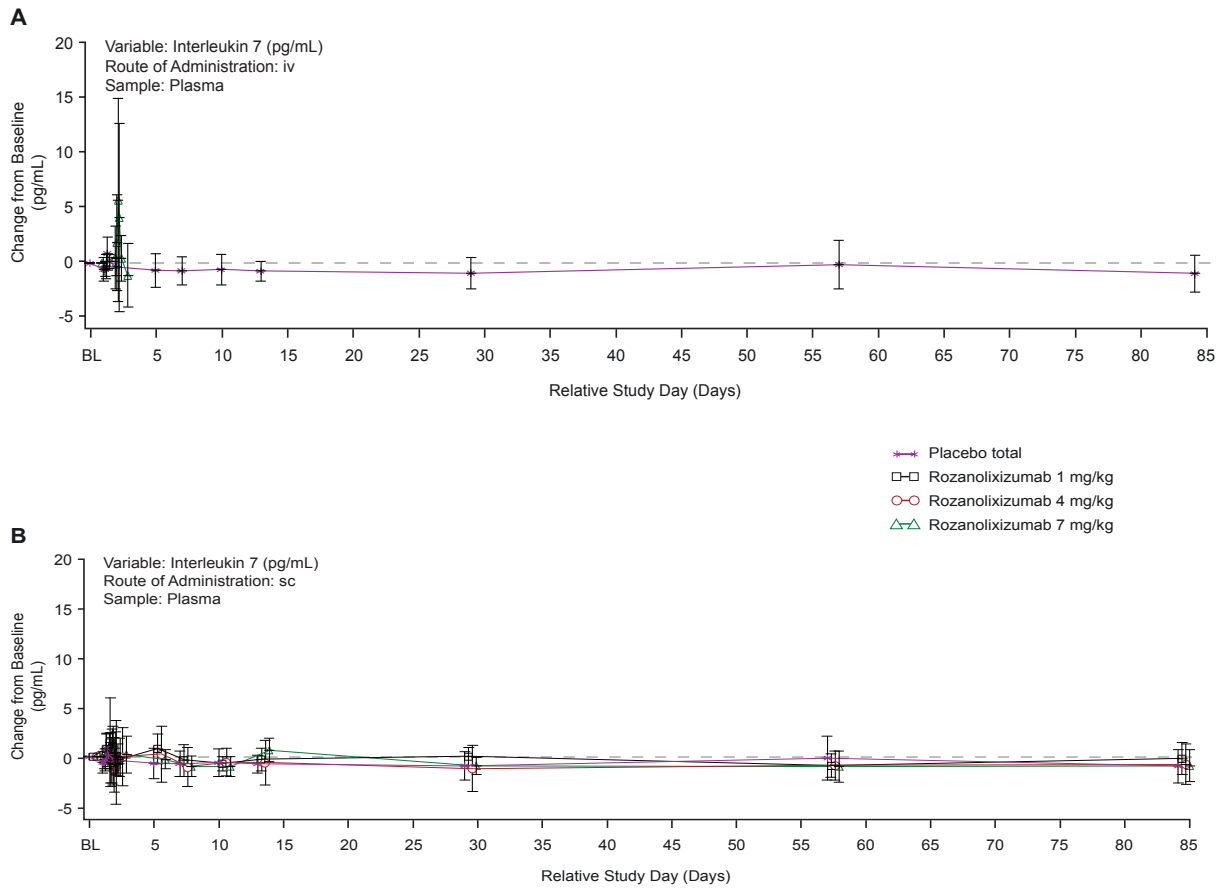
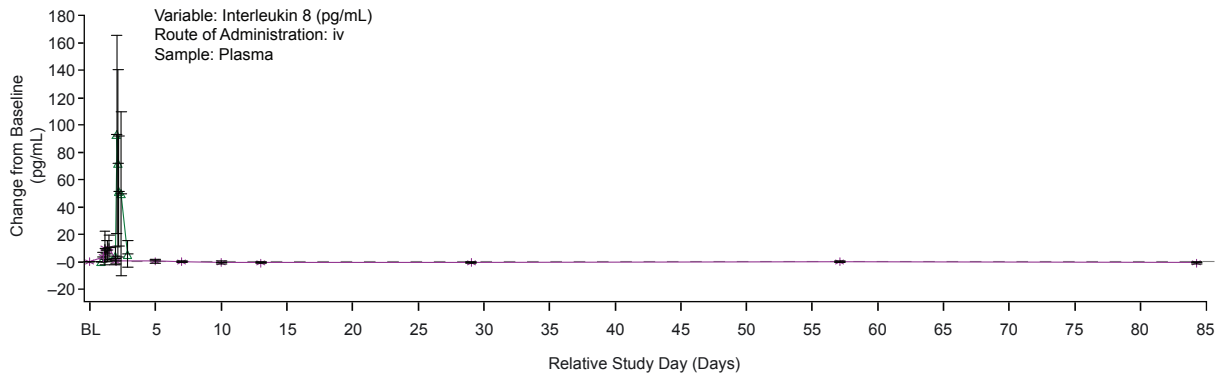


Fig. S2. Changes in selected plasma cytokine concentrations after single-dose rozanolixizumab in healthy subjects. Mean change from baseline in plasma concentrations of interleukin-7 (A, B), interleukin-8 (C, D), tumor necrosis factor- α (E, F), monocyte chemoattractant protein-1 (G, H) and macrophage inflammatory protein-1 β (I, J) following a single dose of placebo or rozanolixizumab by IV or SC administration.

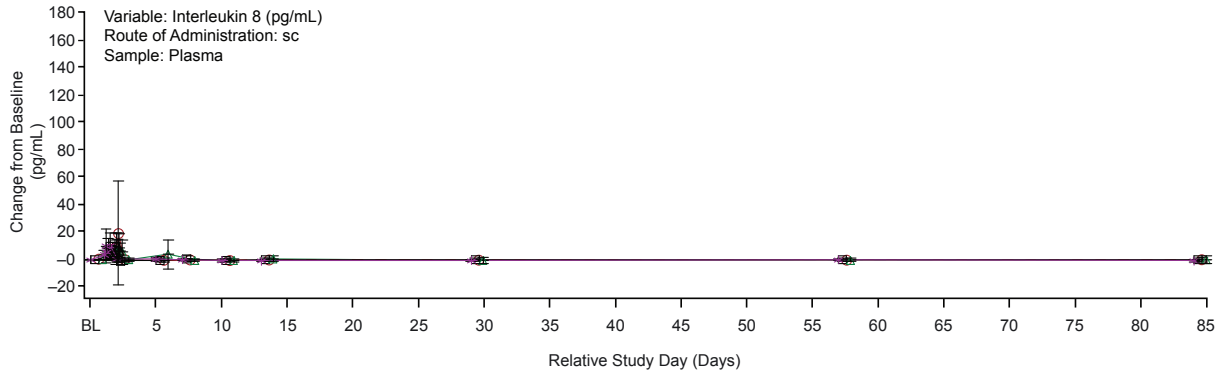


BL=baseline.

C

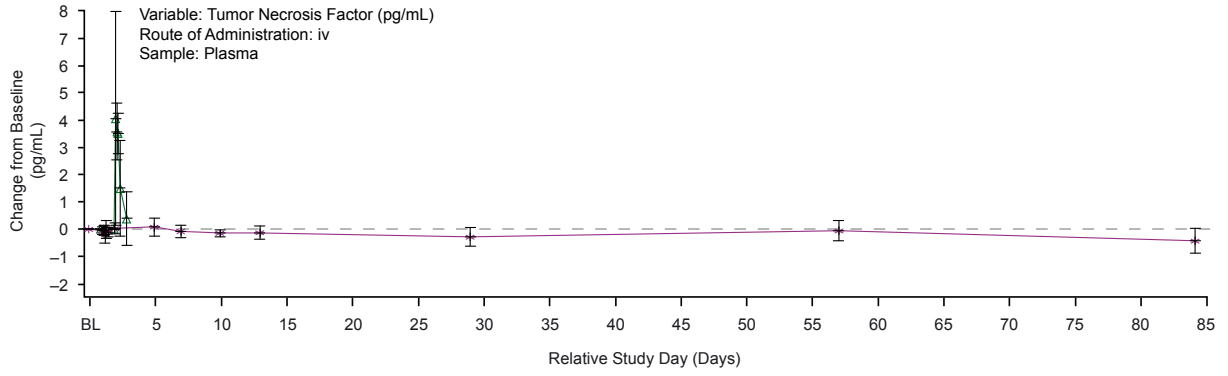


D

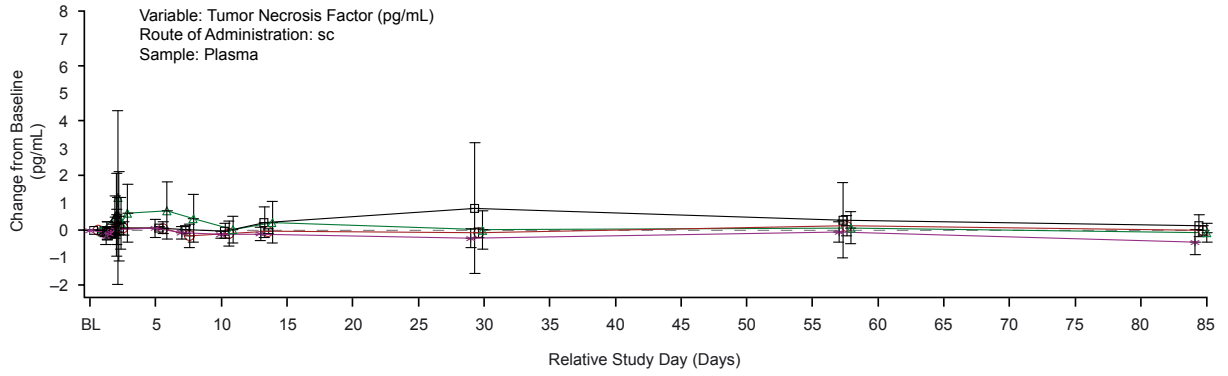


BL=baseline.

E

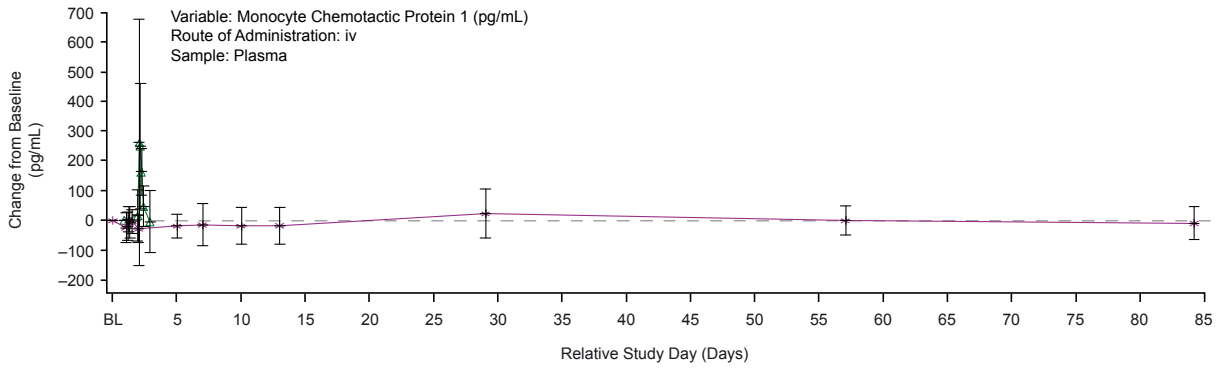


F

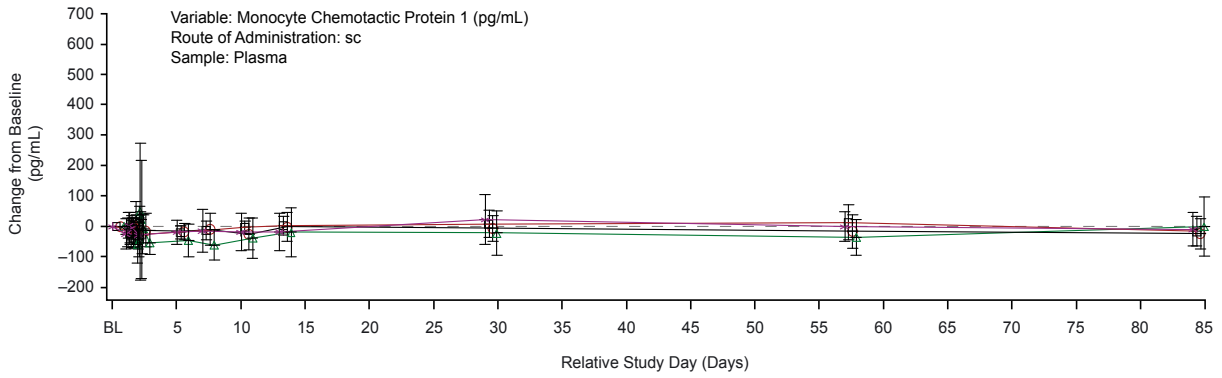


BL=baseline.

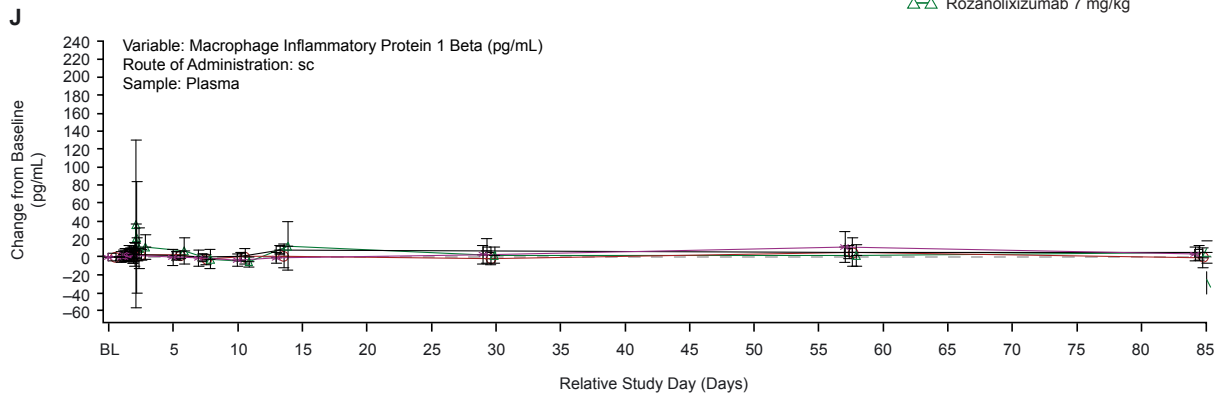
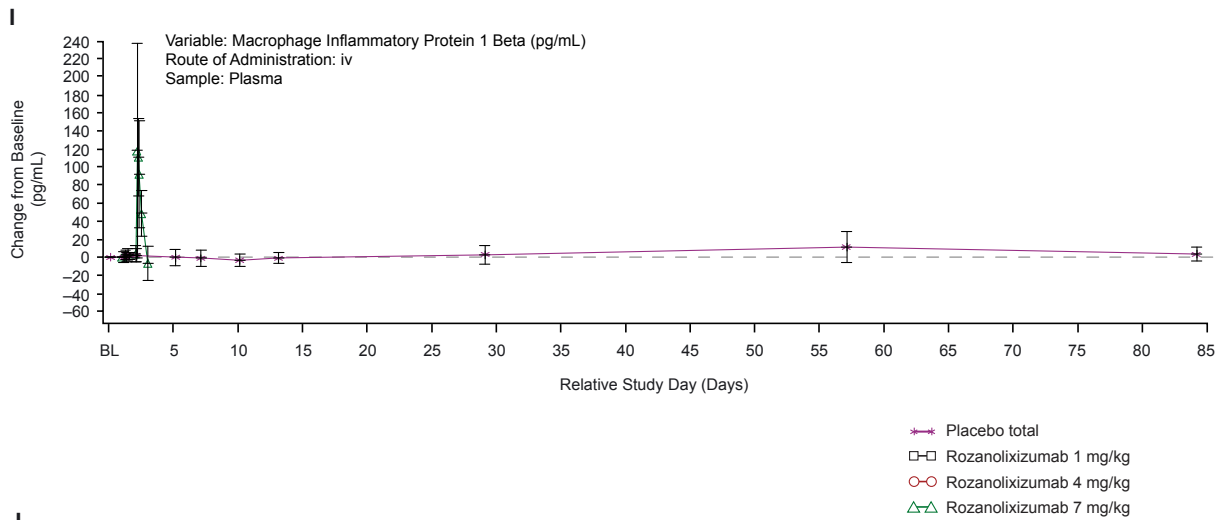
G



H



BL=baseline.



BL=baseline.

Placebo includes all subjects across route of administration. Baseline is defined as the Day -1 result or, the Day 1 predose result as applicable. BL, Baseline.